

UNIVERSITY
OF MIAMI



SolidWorks Installation & Licensing

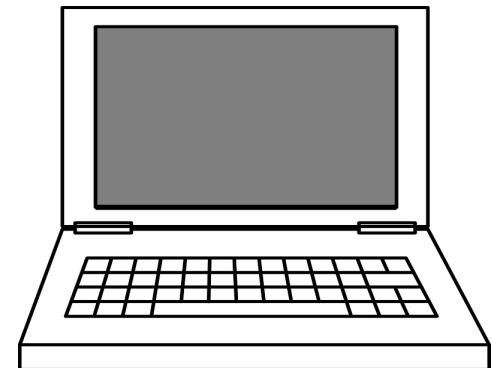
College of Engineering

Student Technology Help Desk, Spring 2024



SolidWorks Installation & Licensing

- This walkthrough is intended to assist students with downloading, installing, and licensing of the SolidWorks software
- Please note, your computer will need to be connected to the university campus Wi-Fi network **CaneNet_Wireless** in order to successfully license the software
- The SolidWorks software is recommended for Windows computers ONLY
- For additional assistance or questions, please contact the Student Technology Help Desk



Step 1:

Navigate a web browser to www.miami.edu/software

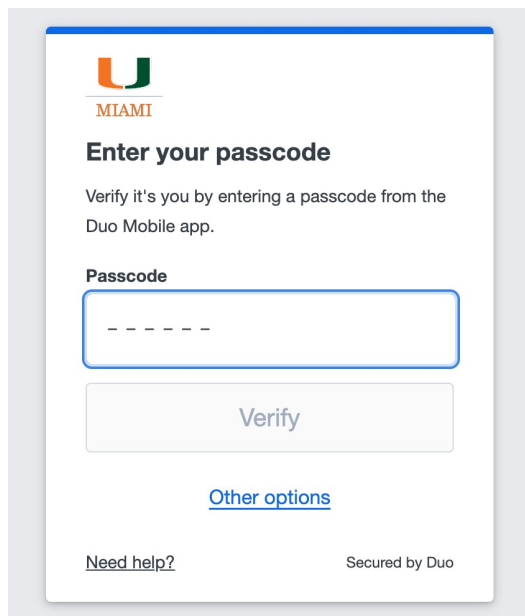
Step 2:

When prompted, sign in with your CaneID and password:



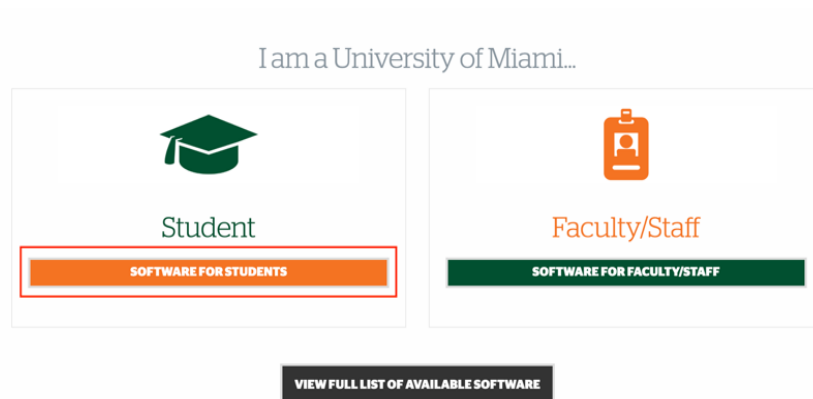
Step 3:

When prompted, authenticate with DUO:







Step 4:

Once signed in, select "Software for Students":



Step 5:

Locate the section titled “Engineering Software” & select “SolidWorks”:

 E-Learning & Online Training	 Video Conferencing	 Engineering Software	 Other Software
Blackboard > LinkedIn Learning > ULearn >	Zoom > Microsoft Teams >	Abaqus > Ansys > Arena > Comsol > SolidWorks > Safetyhub > More.. >	Duo MFA > InCommon SSL Certificates (Server and Web Certs) > Qualtrics > Software for Researchers >

Step 6:

Click on “DOWNLOAD SOLIDWORKS”:

SolidWorks

Description

SolidWorks is used to develop mechatronics systems from beginning to end. At the initial stage, the software is used for planning, visual ideation, modeling, feasibility assessment, prototyping, and project management. The software is then used for design and building of mechanical, electrical and software elements.

- Eligible: Students & Faculty
- Availability: 24 Hours, 7 Days
- Support: Monday - Friday, 8:00 a.m. - 6:00 p.m.



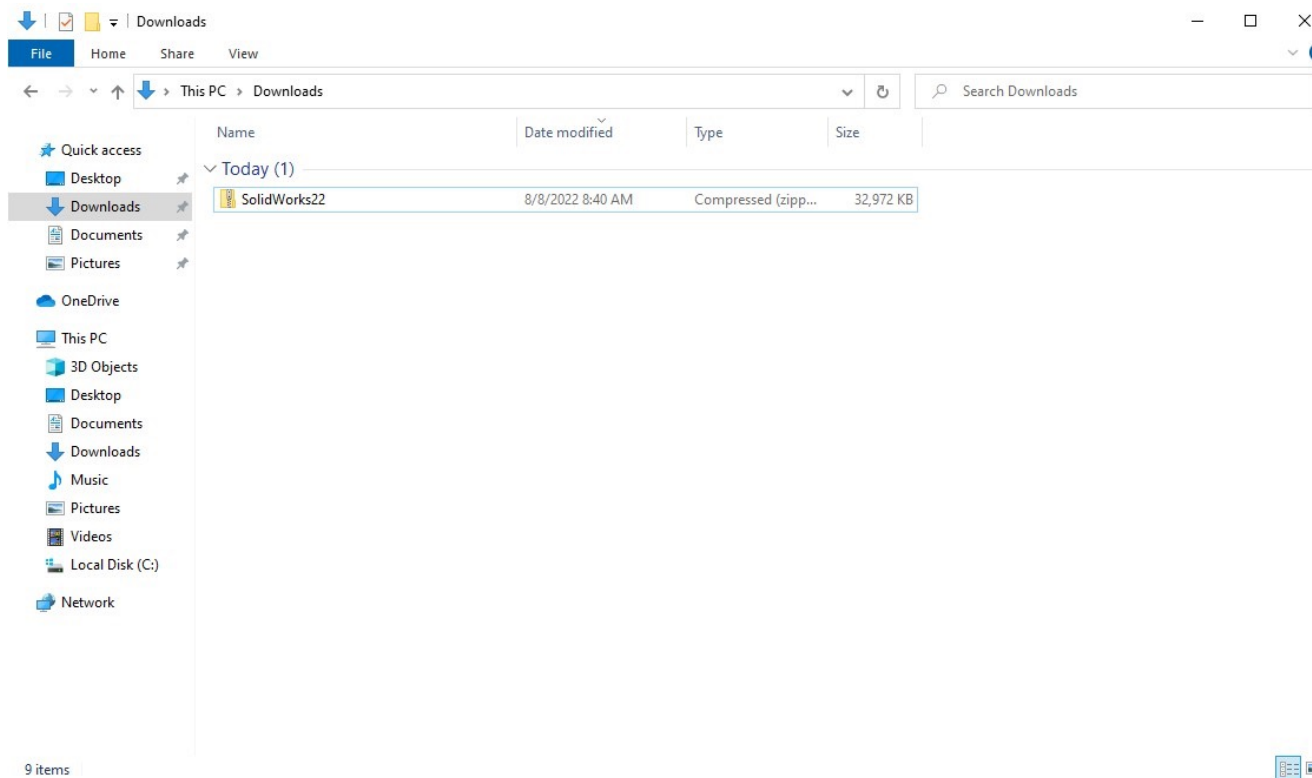
[Open All Tabs](#)

Download Information

DOWNLOAD SOLIDWORKS

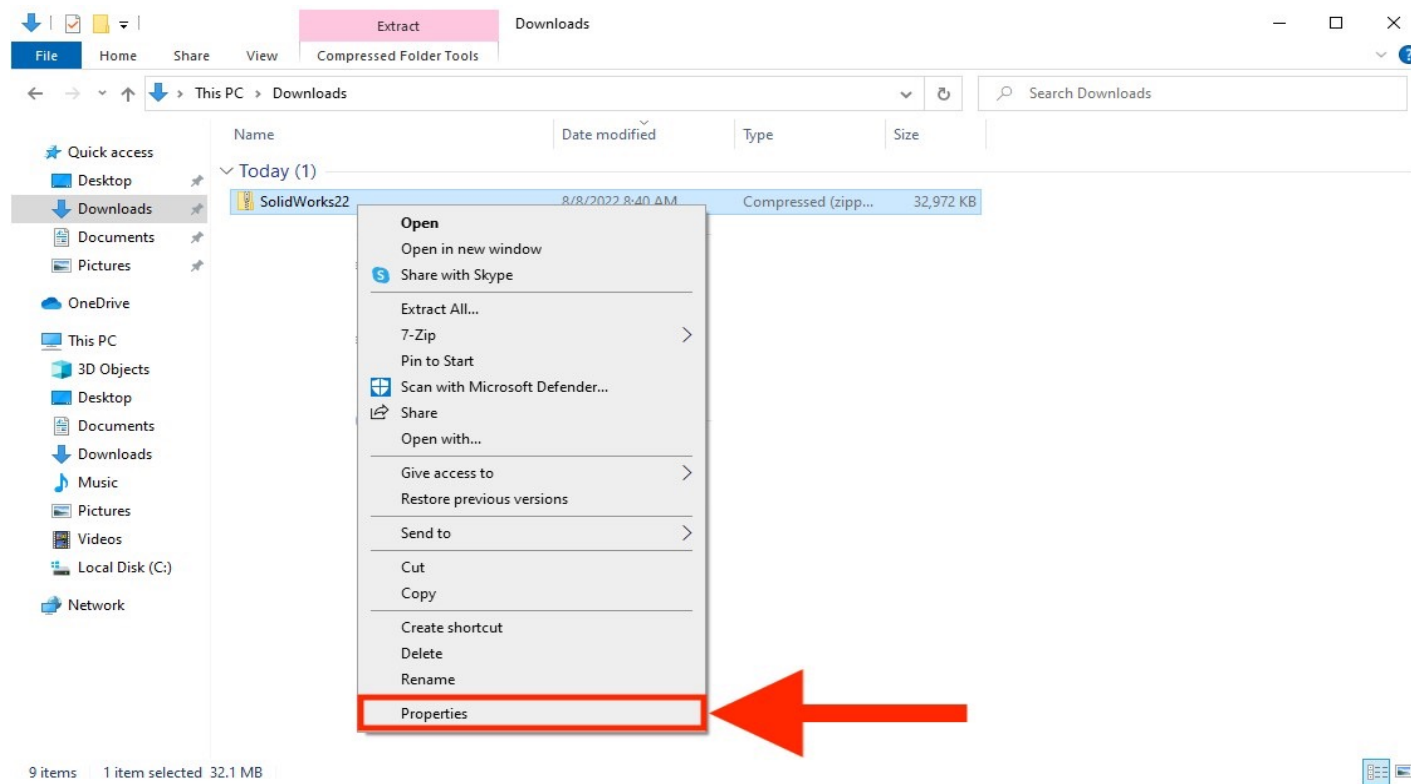
Step 7:

Once downloaded, locate the “SolidWorks22” folder:



Step 8:

Right-click the “SolidWorks22” folder and select “Properties”:



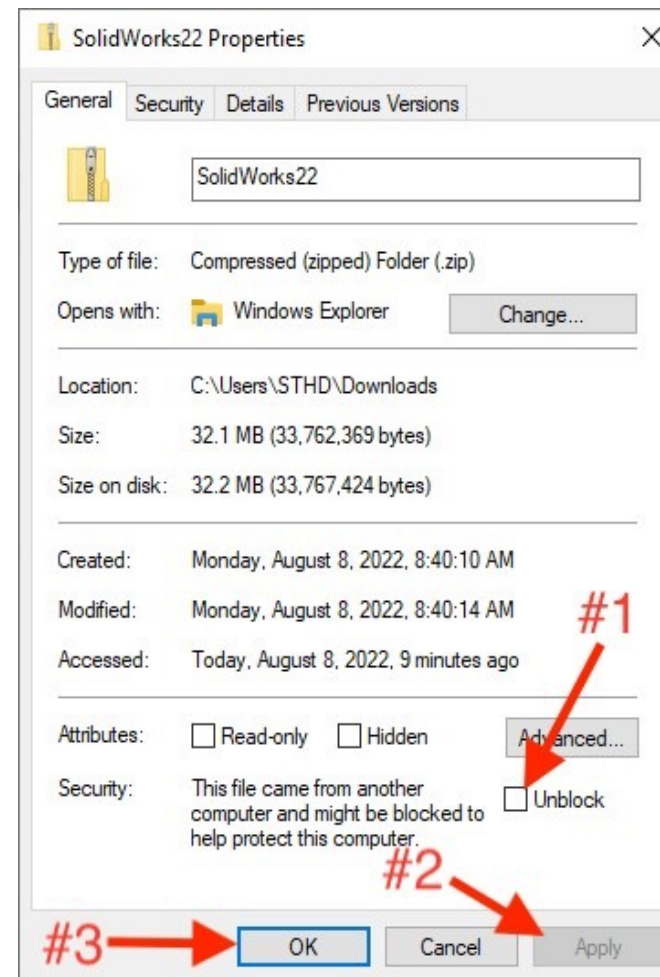
Step 9:

The properties window will open.

First, click on the “Unblock” checkbox.

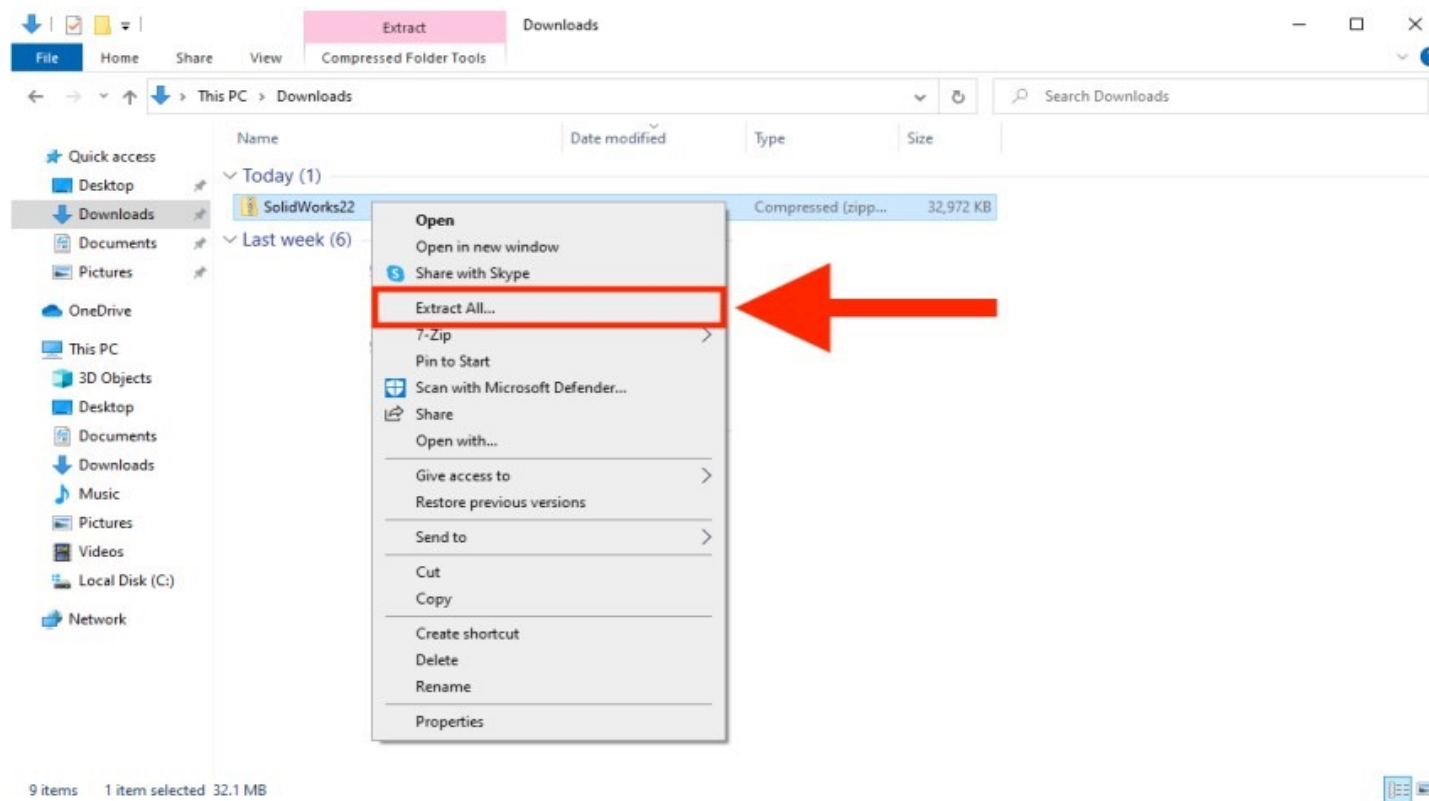
Second, select “Apply”.

Lastly, close the window by pressing on the “Ok” button:



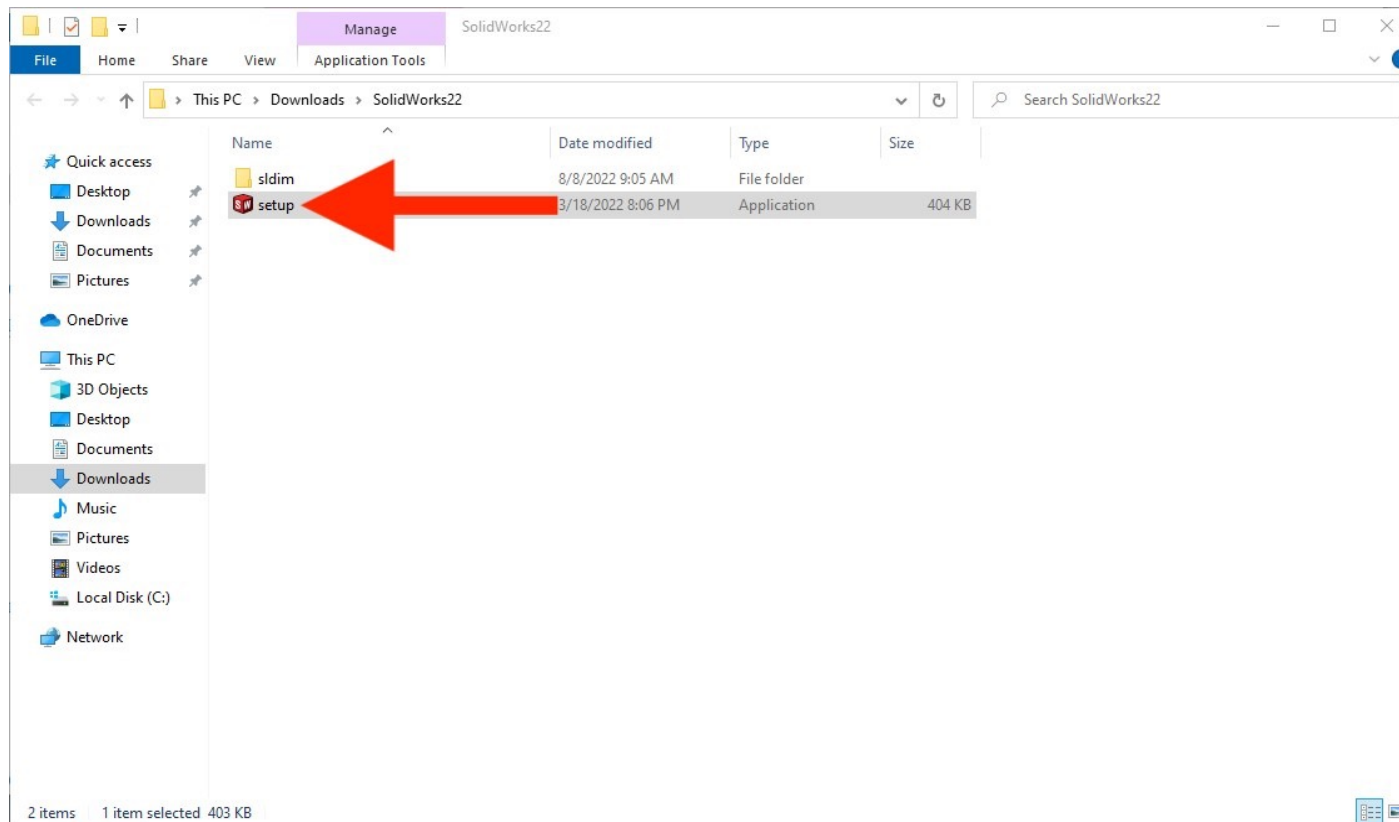
Step 10:

Right-click the “SolidWorks22” folder and select “Extract All”:



Step 11:

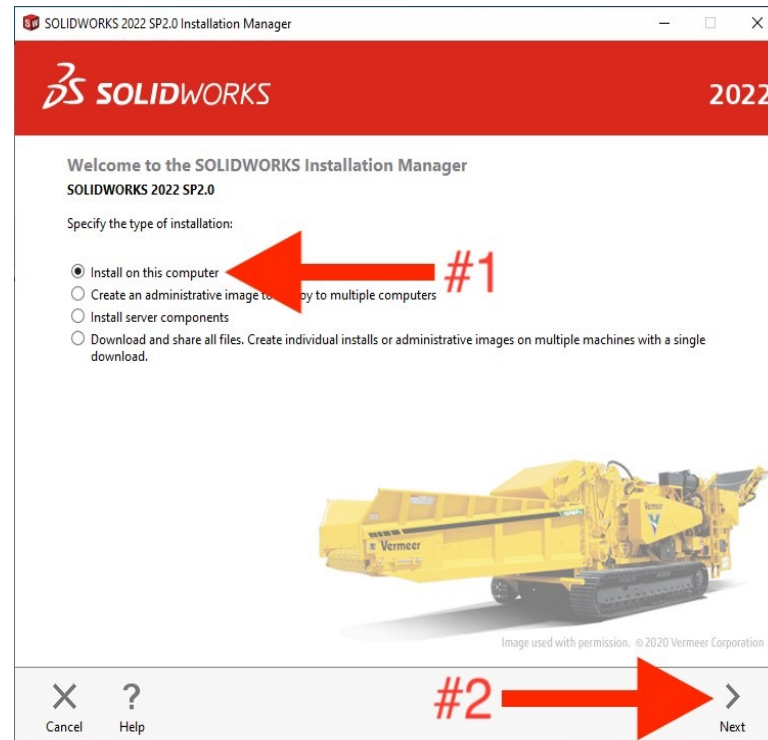
Open the extracted “SolidWorks22” folder and run the “setup” file:



Important Note: To successfully license the software, you will need to be connected to the campus Wi-Fi network (**CaneNet_Wireless**).

Step 12:

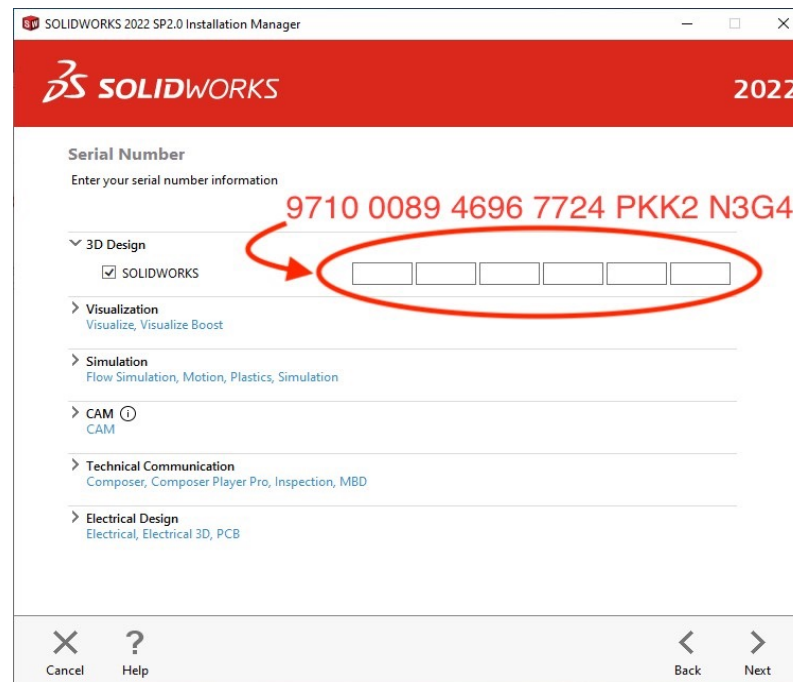
The Installation Manager will open. First, make sure that “Install on this computer” is selected. Second, click “Next”:



Step 13:

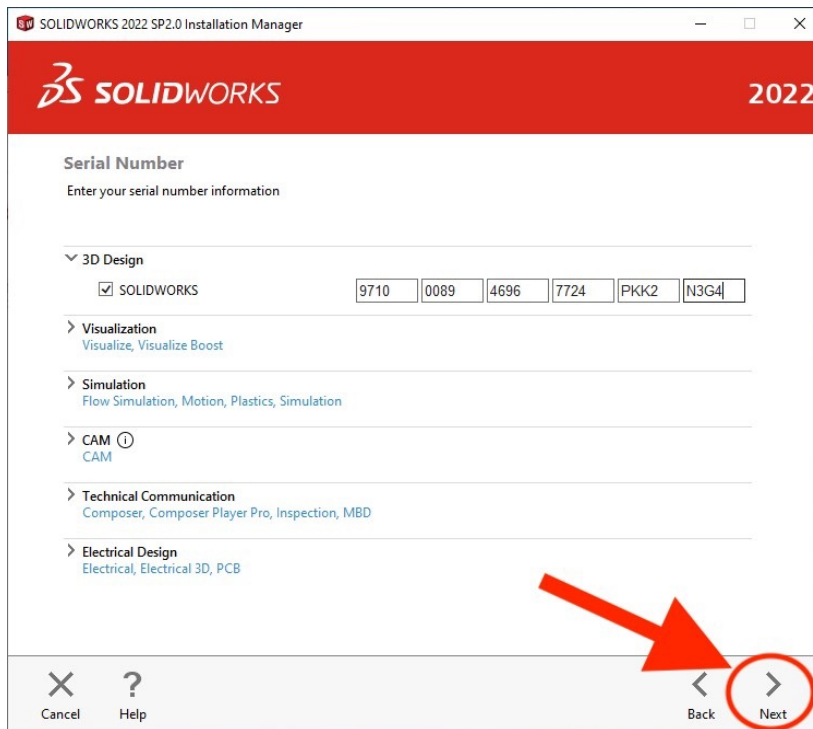
In the “Serial Number” box, enter the following number:

9710 0089 4696 7724 PKK2 N3G4:



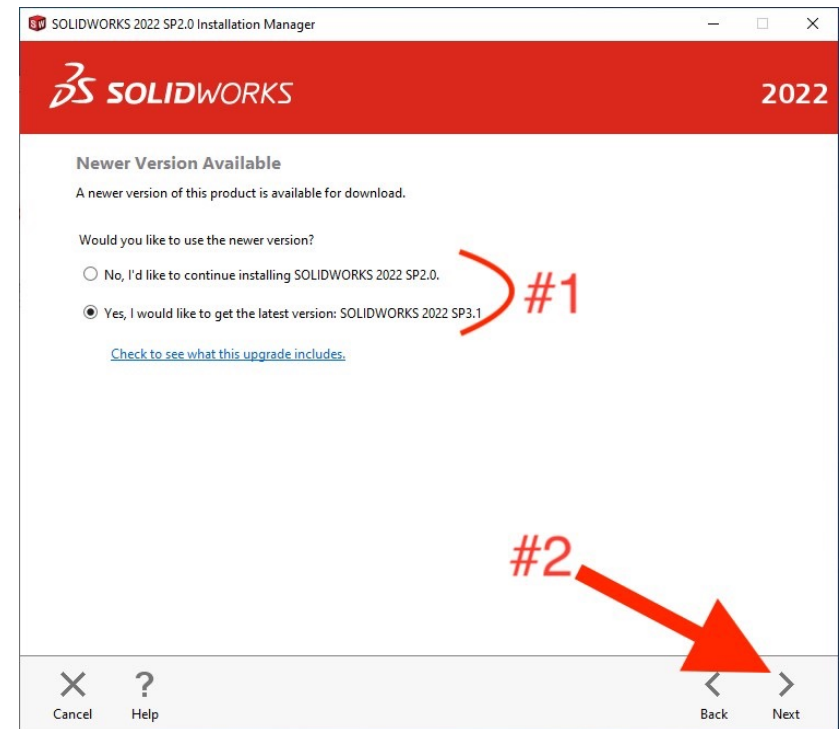
Step 14:

Continue to the next screen by clicking “Next”:



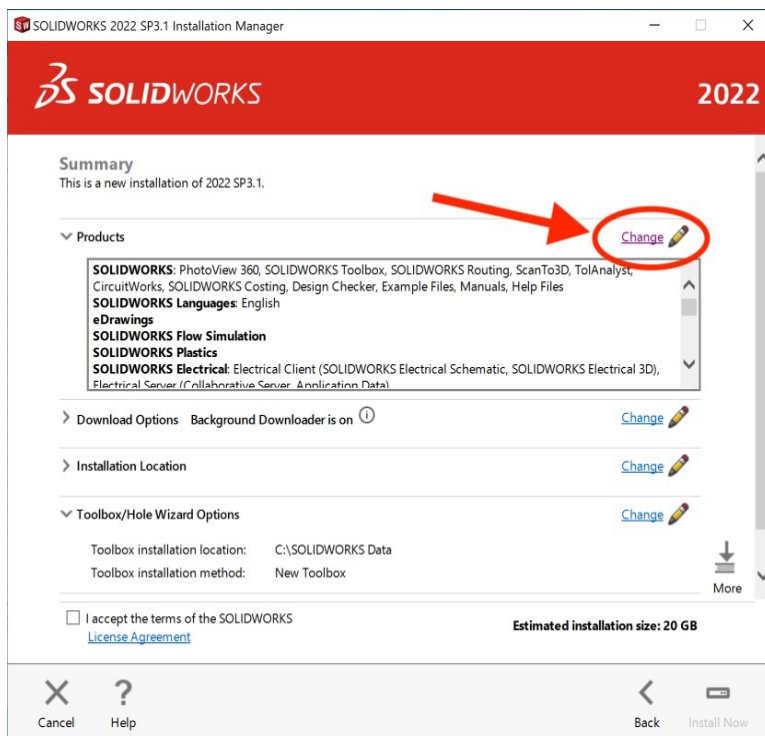
Step 15:

Select whether you would like to get the latest version of SolidWorks. Then, select “Next”:

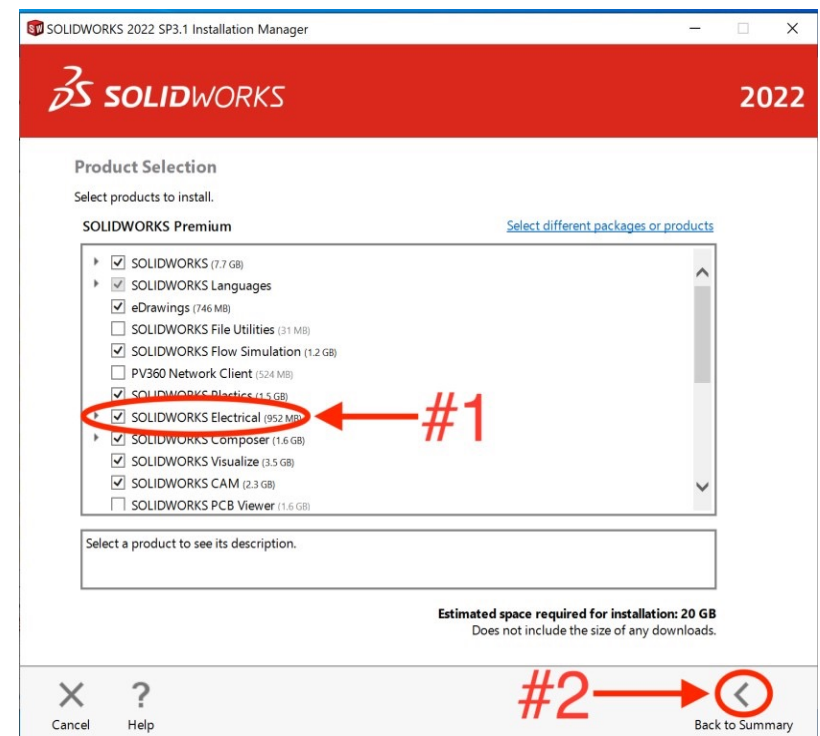


Step 16:

Click on the “Change” button next to “Products”:

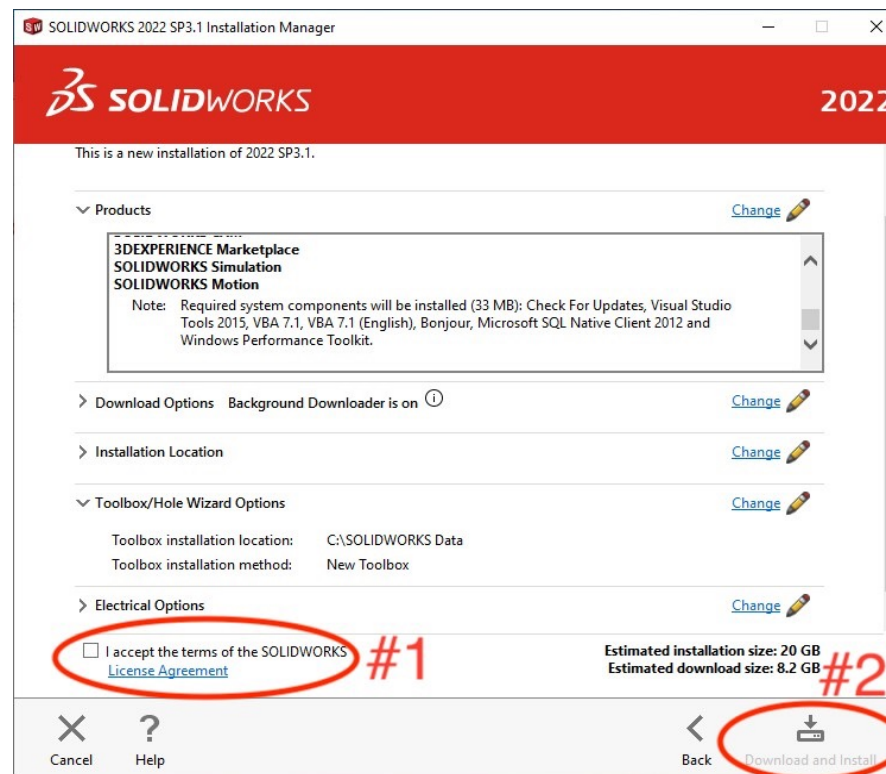
**Step 17:**

Uncheck the “SOLIDWORKS Electrical” checkbox. Then, click on “Back to summary”:



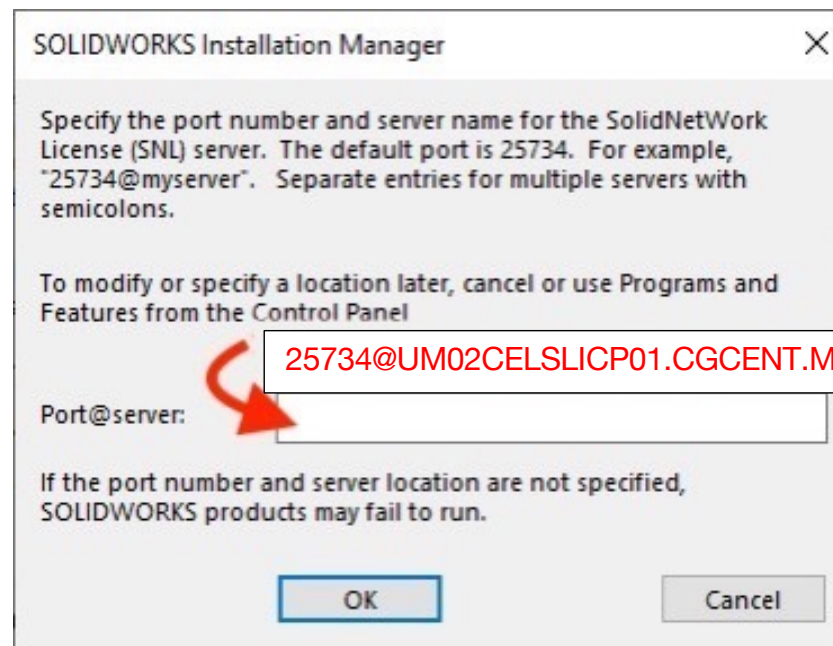
Step 18:

First, select the license agreement checkbox. Second, click on “Download and Install”:



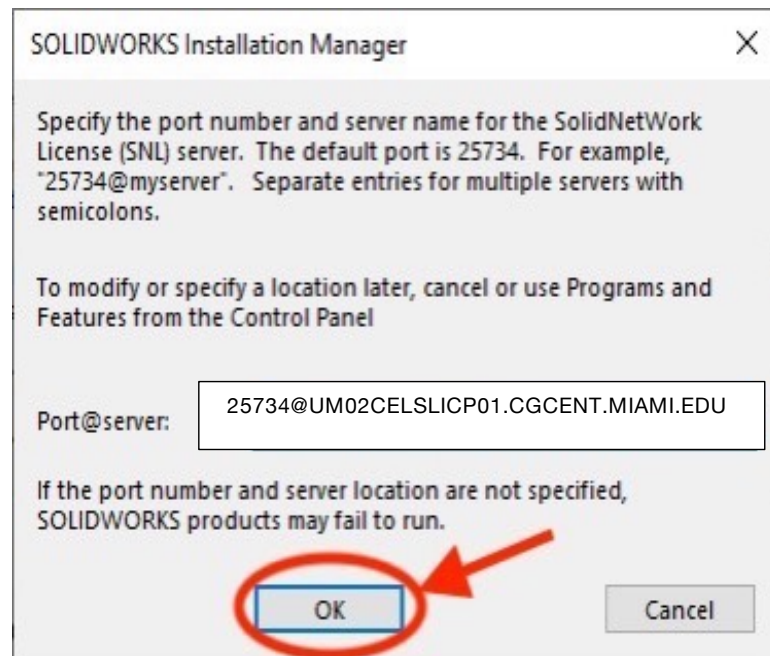
Step 19:

A pop-up menu will appear asking for the Port Server. In the empty box, enter: **25734@UM02CELSLICP01.CGCENT.MIAMI.EDU**:



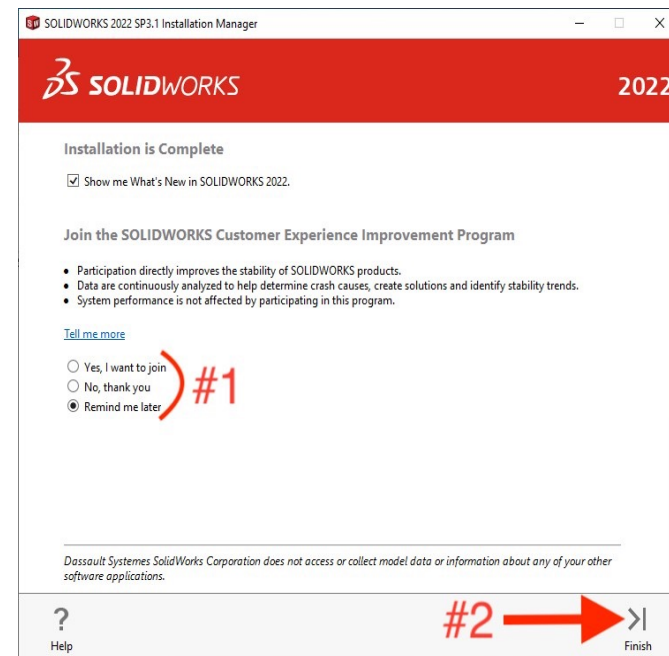
Step 20:

Click “Ok”. The installation will now begin:



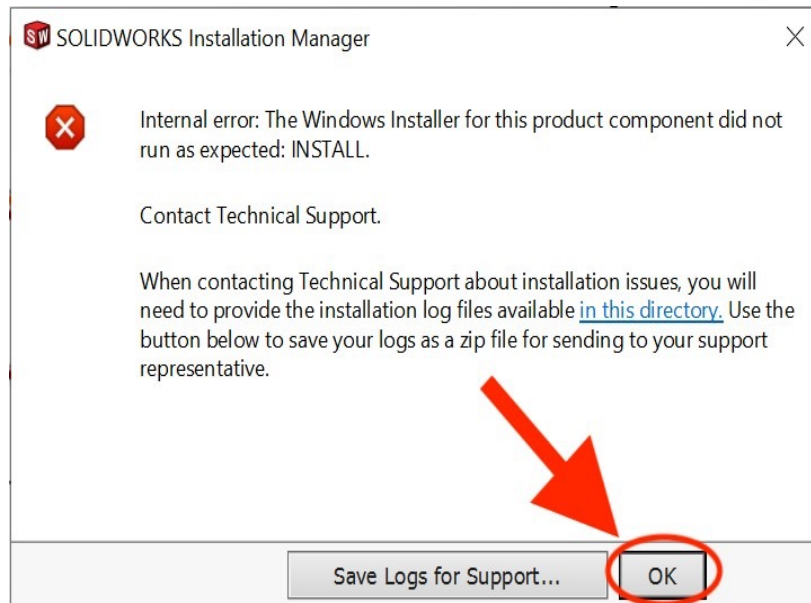
Step 21:

Once the installation is complete, select “Finish”:



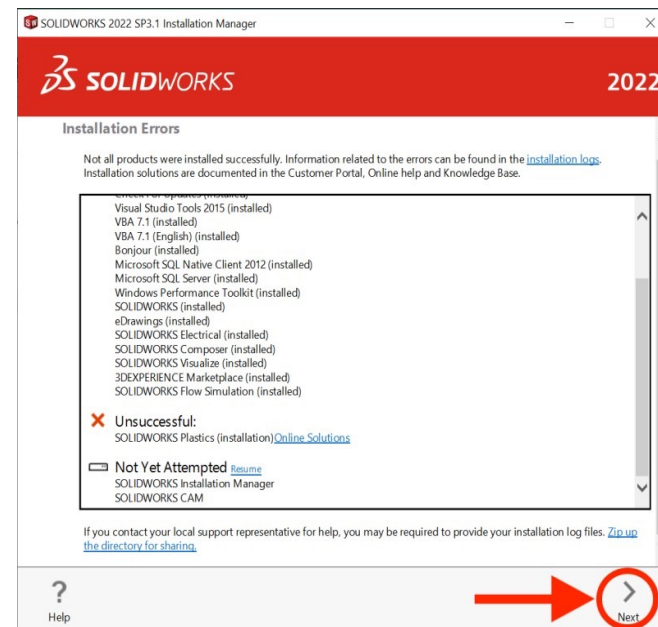
Step 21:

During installation, an “Internal Error” menu may appear. Select “Ok” to continue:



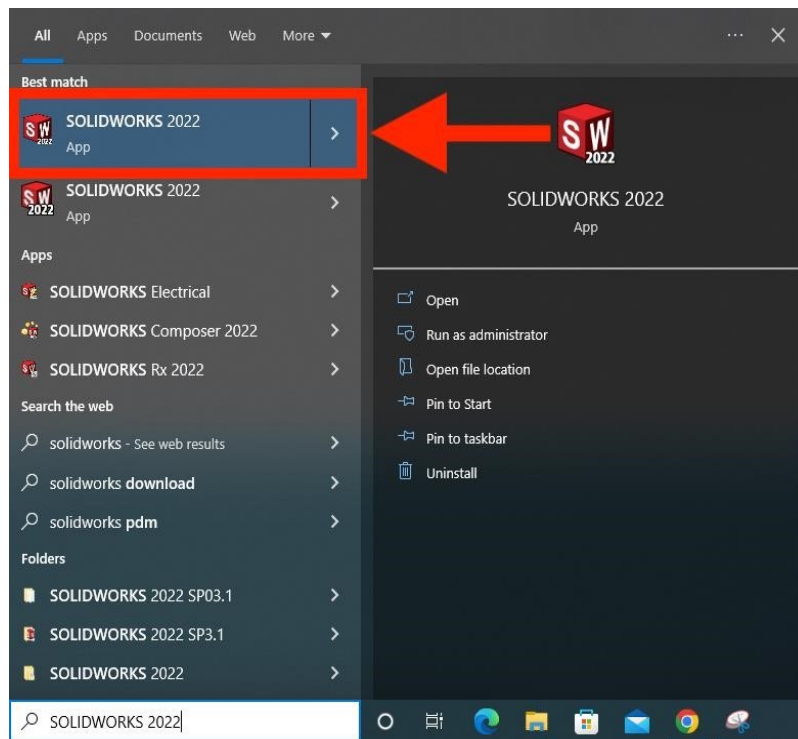
Step 22:

If the previous error message appeared, then the following screen will open. This may not mean that the installation itself was unsuccessful, as it most likely refers to an add-on. Press “Next”:



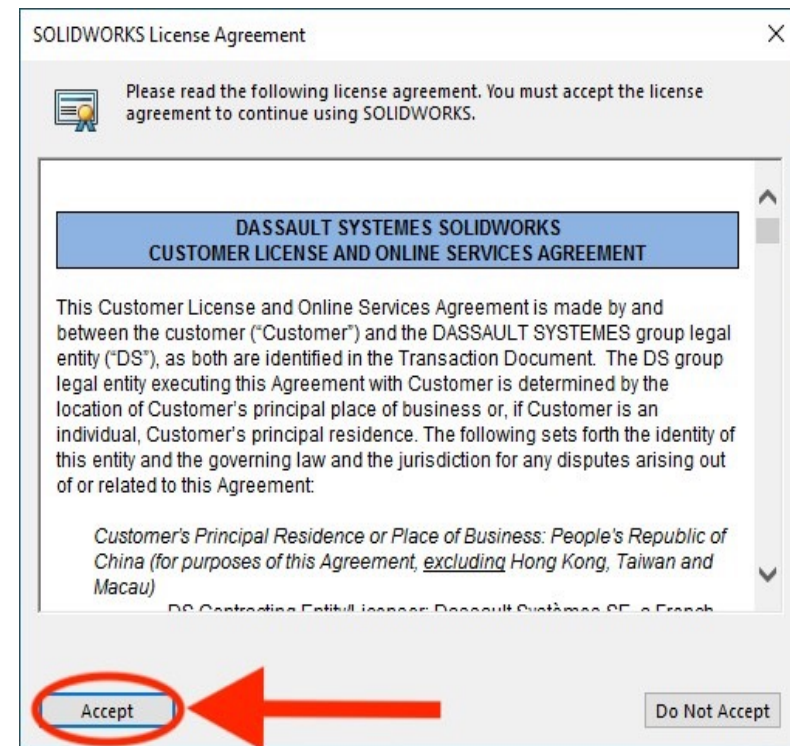
Step 23:

Search for and open the SOLIDWORKS 2022 application:



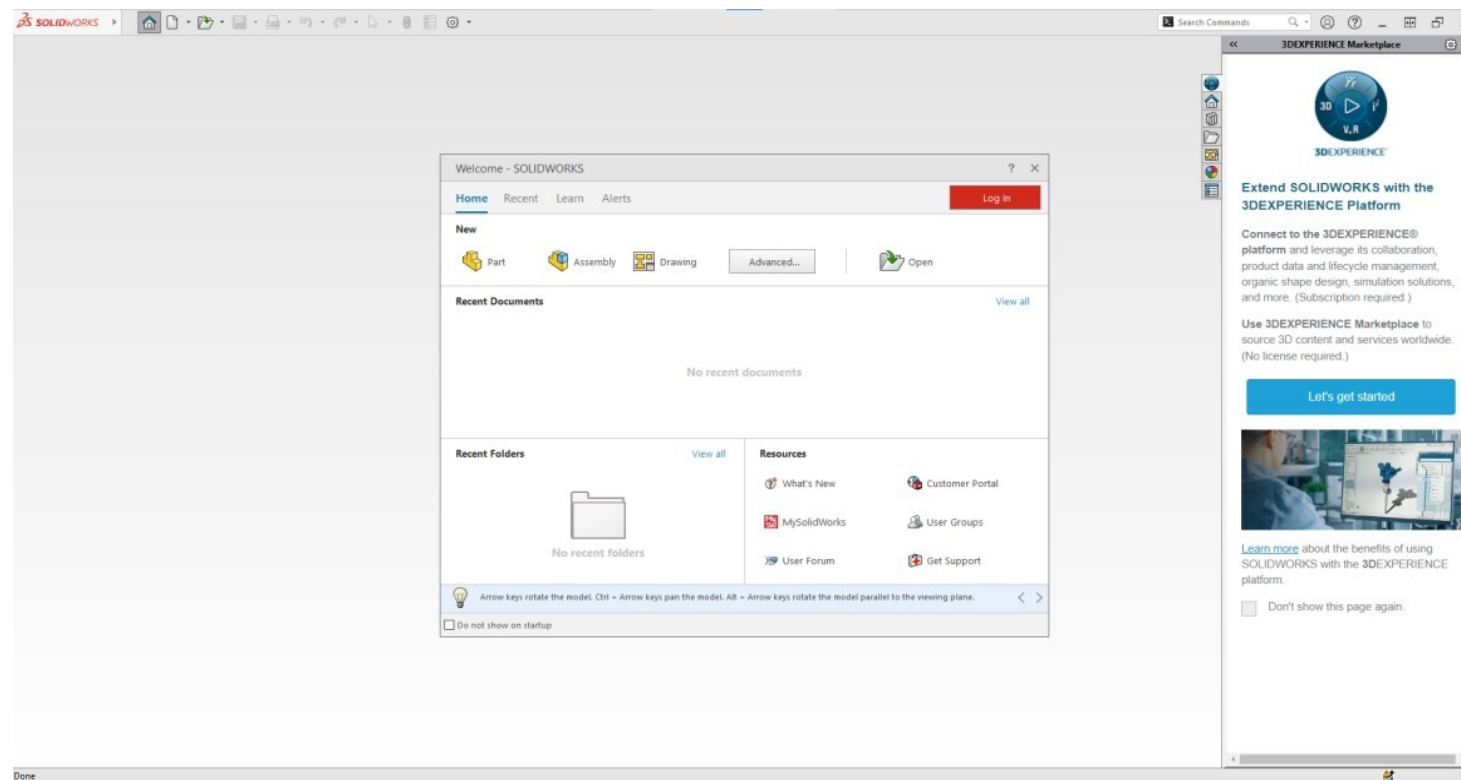
Step 24:

Select "Accept" on the License Agreement:



Step 25:

The application opens, indicating a successful installation:



UNIVERSITY
OF MIAMI



The SolidWorks software is now
installed.

If you have any questions or require additional
assistance, please reach out to:

Student Technology Help Desk

Richter Library, Room 325

305-284-8887

Mon-Fri 9 AM to 5 PM